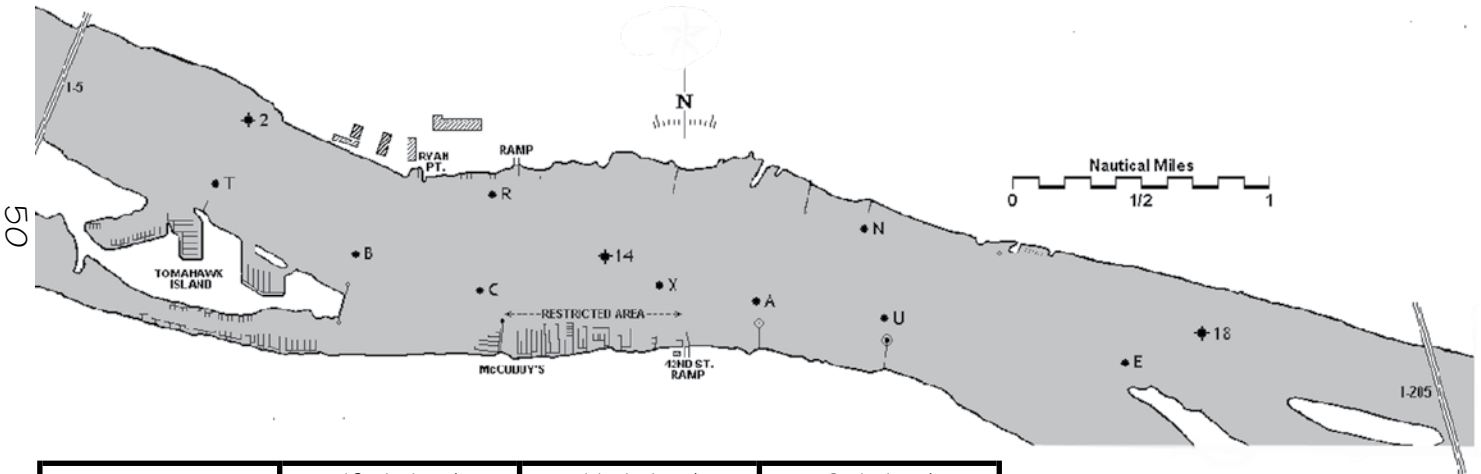


OCSA Chart of Numeric Courses



E - East River	18 - Lighted Red Buoy	14 - Lighted Red Buoy	2 - Lighted Red/Green Buoy
N - North River	C - Columbia	B - Bar	A - Airport
X - Sextant	U - Upper Airport	T - Tomahawk	R - Ryan

Numeric Table of Courses						East Wind	
						41	C-X-C-X-C
Northwest Wind		West Wind		South Wind		14-A-14-A-14	
1	C-2-C-2-C	15	14-B-14-B-14		N-A-U-N-A-N	R-N-R-N-R	
2	C-2-B-2-C	16	14-T-14-T-14		N-A-N-A-N	R-N-R-14-R	
3	14-2-14-2-14	17	14-T-B-T-14		N-U-N-U-N	C-X-B-C	
4	14-2-C-2-14	18	14-T-C-T-14	31	N-U-E-N-U-N	C-14-B-C	
5	X-R-C-X-R-X	19	14-B-N-14		(S) N-U-A-N-U-A-N	14-A-R-14	
6	X-R-X-R-X	20	14-B-A-14		R-C-14-R-C-R	14-A-R-C-14	
7	A-2-A-14-A	21	14-B-U-14		R-C-A-R-C-R	Northeast Wind	
8	A-R-A-R-A	Southwest Wind			R-C-R-C-R	14-N-14-N-14	
9	A-R-C-A-R-A	22	R-B-R-B-R		R-C-N-R-C-R	X-N-A-N-X	
10	C-2-X-C	23	R-B-14-R-B-R	Southeast Wind		North Wind	
11	C-2-A-C	24	R-T-R-T-R		R-X-R-X-R	51	C-R-B-C-R-C
12	14-2-A-14	25	14-C-N-14		R-A-R-A-R		C-R-C-R-C
13	14-2-A-14-A-14	26	14-C-E-14		R-A-R-14-R		U-N-A-N-U
14	14-2-U-14	27	R-B-14-R-B-14-R		R-U-R-14-R		U-N-A-U-N-U

The chart shows the marks on the river as designated by OCSA. The Race Committee may or may not set all of these marks.

The order in which marks are to be passed is determined by the courses outlined on the Numeric Table of Courses on this chart or by listing the individual OCSA marks. Except for starting or finishing, these courses are to be sailed with all marks left to port unless otherwise clearly designated. An (S) BEFORE a course indicates that ALL marks shall be left to starboard. An (S) AFTER a mark indicates that the INDIVIDUAL mark shall be left to starboard. Courses will be displayed on the committee boat by listing the class division or fleet division, followed by the numeric course code from the Numeric Table of Courses or by listing individual OCSA marks. All class divisions or fleets may not necessarily sail the same course.

The start/finish line will be an imaginary line drawn between an orange flag or shape displayed by the committee boat and the start/finish mark or navigation buoy. The Race Committee may have a separate starting line and finish line. When the starting line and finish line are separate, the start line will be marked with a green buoy and the finish line is restricted. Do not cross the finish line during the race unless you are finishing the race.